



Institute of Human Values in Health Care  
30 Courtenay Drive  
MSC 295, BM277  
Charleston, SC 29425

Twenty-Sixth Annual  
Thomas A Pitts Memorial  
Lectureship In Medical Ethics

Race and Ethnicity in  
21st Century Health Care

March 26, 2020

- Visit beautiful Charleston, South Carolina
- Outstanding nationally known speakers

For conference updates and to learn more  
about the Institute of Human Values in  
Health Care please visit our website at  
<http://www.values.musc.edu>

## Twenty-Sixth Annual Thomas A Pitts Memorial Lectureship In Medical Ethics

# Race and Ethnicity in 21st Century Health Care



March 26, 2020

Medical University of South Carolina, Charleston, South Carolina

Presented by the:

Medical University of South Carolina Institute of Human Values in Health Care

South Carolina Clinical and Translational Research Institute

Office of Humanities

Office of Continuing Medical Education, College of Medicine

Supported by the MUSC Foundation



Changing What's Possible

# Race and Ethnicity in 21st Century Health Care

Thursday, March 26, 2020

- 8:00 REGISTRATION  
8:30 Welcome  
Lisa Saladin, PhD, Provost and Executive Vice President for Academic Affairs, Medical University of South Carolina  
8:35 Introductory Comments  
Robert M. Sade, MD, Director, Institute of Human Values in Health Care

## KEYNOTE ADDRESS

- 8:45 Thaddeus J. Bell, MD, Founder and CEO, Closing the Gap in Health Care, Inc., Associate Dean for Diversity (Retired), Medical University of South Carolina  
Closing the Gap in Health Care: A Personal Odyssey  
9:15 Audience Q&A

## SESSION I: RACE AND MEDICAL SCHOOL ADMISSIONS

- Moderator: Andrea D. Boan, PhD  
9:30 Nancy Zisk, JD, Professor of Law, Charleston School of Law, Charleston, SC  
A Race-Conscious Admissions Policy Is Necessary for Medical Schools  
10:00 Richard H. Sander, JD, PhD, Professor of Law, University of California, Los Angeles  
Race is an Inappropriate Criterion for Medical School Admission  
10:30 Panel: Zisk and Sander  
10:45 COFFEE BREAK

## SESSION II: BIAS IN MEDICAL EDUCATION

- Moderator: Jason F. Arnold, JD, MPH  
11:00 Paul F. George, MD, Associate Professor of Family Medicine and Medical Science, Associate Dean of Medical Education, Alpert Medical School, Brown University, Providence, RI  
Inaccurate Portrayal of Race in Medical Education Endangers Patients  
11:30 Keisha S. Ray, PhD, Assistant Professor, McGovern Center for Humanities and Ethics, McGovern Medical School, University of Texas Health Sciences Center, Houston, TX  
Teaching Racial Disparities: Using Testimonies from Black Patients to Humanize Data  
12:00 Panel: George and Ray  
12:15 Lunch

## SESSION III: RACE AND PALLIATIVE CARE

- Moderator: Willette S. Burnham, PhD  
1:00 Ronit Elk, PhD, Professor of Medicine and Associate Director of the Southeast Institute for Innovation in Palliative and Supportive Care, University of Alabama at Birmingham, AL  
Disparities in End-of-Life Care in America  
1:30 Patrick T. Smith, PhD, MDiv, Associate Research Professor of Theological Ethics and Bioethics; Senior Fellow, Kenan Institute for Ethics, Duke University, Durham, NC  
Assisted Suicide: A Diversity of Perspectives  
2:00 Panel: Elk and Smith  
2:15 COFFEE BREAK

## SESSION IV: THE CONCEPT OF RACE IN BIOMEDICAL RESEARCH

- Moderator: Yuri K. Peterson, PhD  
2:30 Quayshawn Spencer, PhD, MS, Robert S. Blank Presidential Associate Professor of Philosophy, University of Pennsylvania, Philadelphia, PA  
Race Remains Relevant in Biomedical Research  
3:00 Michael Yudell, PhD, MPH, Professor and Chair, Community Health and Prevention, Dornsife School of Public Health, Drexel University, Philadelphia, PA  
Abandoning Race as a Measure of Human Difference in Biomedical Research  
3:30 Panel: Spencer and Yudell

## SESSION V: PANEL: ALL SPEAKERS

- Moderator: Laura Specker Sullivan, PhD  
3:45 Panel: All Speakers and Audience  
4:30 Adjourn

# Registration Form

## Race and Ethnicity in 21st Century Health Care Thursday, March 26, 2020

Please fill out this registration form and email: [edlund@musc.edu](mailto:edlund@musc.edu)

or mail to:  
Institute of Human Values in Health Care  
Attn: Ann Edlund  
30 Courtenay Drive  
MSC 295, BM 277  
Charleston, SC 29425

Required fields marked with \*

Name (including degrees):\*

Title:

Employer:

Affiliation:

Mailing Address:\*

City:\* State:\* Zip:\*

E-mail:\* Day Phone #

Payment:

- ☐ Check (enclosed) payable to Institute of Human Values in Health Care  
☐ Credit card: ☐ VISA ☐ MC ☐ Am. Ex. Email or Mail

Sorry, no electronic / online submission is possible.

Card # Exp. Date: \_\_\_\_ / \_\_\_\_

Cardholder name: Signature:

☐ Purchase Order: #

## Registration: Information Fees And Deadlines

(Includes continental breakfast, coffee breaks, lunch and course materials)

General registration:

- ☐ Free for MUSC, College of Charleston, Trident, and Citadel Faculty, Students, and Staff  
☐ Non-MUSC attendees \$250.00  
☐ CME or CEU credit certificates-\$25.00 for non-MUSC attendees  
☐ Credits earned by MUSC personnel; will be loaded into the CME Tracker. You may view and print an unofficial transcript at no charge.  
See [muscd.edu/cme](http://muscd.edu/cme) for details

How did you hear about the conference?

- ☐ Brochure, ☐ Catalyst, ☐ Colleague, ☐ Broadcast message,  
☐ CME Office, ☐ Email announcement, ☐ Poster, ☐ Internet  
☐ Ad in  
☐ Other

## Accommodations

The following hotel is offering special rates to those attending the Thomas A Pitts Lectureship. We suggest that you make your reservations immediately because hotel space is at a premium during the spring.

Comfort Inn Downtown Charleston  
144 Bee St  
Charleston, SC 29401  
Telephone: 843-577-2224  
Distance from conference venue: 0.3 miles  
\$160.65 per night

## 2 Easy Ways To Register



Email: [edlund@musc.edu](mailto:edlund@musc.edu)



Mail: Mail your completed registration form:  
Institute of Human Values in Health Care  
Attn: Ann Edlund  
30 Courtenay Drive  
MSC 295, BM277  
Charleston, SC 29425

## Cancellation Policy

If cancellation is received in writing no later than February 27, 2020, a refund will be made, less a \$50.00 processing fee. No refunds will be granted after February 27, 2020. Substitute attendees, however, are welcome and encouraged.

## For More Information

Any questions about this conference or the  
Institute of Human Values in Health Care:

Ann Edlund ([edlund@musc.edu](mailto:edlund@musc.edu)); (843) 792-8390  
or  
Robert M. Sade, MD ([sader@musc.edu](mailto:sader@musc.edu)).

## Faculty Biographies 2020



**Thaddeus J. Bell, MD**, is retired Associate Dean for Diversity of the College of Medicine, Medical University of South Carolina. He has been a community and statewide leader in medicine for many years and has been an elite athlete at the international Master's level. He has received numerous awards at the local, state, and national levels for his work in diversity and public education.



**Ronit Elk, PhD**, Professor, School of Medicine, Division of Geriatrics, Gerontology and Palliative Care, University of Alabama, Birmingham; Associate Director of the Southeast Institute for Innovation in Palliative and Supportive Care. Her NIH-funded research focuses on partnering with underserved populations, in particular rural African American communities, to determine effective culturally-based palliative care programs.



**Paul F. George MD, MHPE**, Associate Professor of Family Medicine, Associate Professor of Medical Science, Director, Second Year Curriculum and Primary Care-Population Medicine Program, Associate Dean of Medical Education, Warren Alpert Medical School of Brown University, Providence, RI. He has received numerous teaching awards, including the Medical Senior Citation, awarded to one faculty member as the highest honor a graduating class can bestow, five times.



**Keisha S. Ray, PhD**, Assistant Professor, McGovern Center for Humanities and Ethics, McGovern Medical School, University of Texas Health Sciences Center, Houston, TX. Her work focuses on the justice questions related to biomedical enhancement and racial disparities in health care, and more generally in the fields of bioethics, contemporary moral theory, research ethics, and medical humanities.



**Richard H. Sander, JD, PhD**, Professor of Law, University of California, Los Angeles. He has published a comprehensive study of affirmative action in American law schools, focusing particularly on the ways in which large preferences imposed unexpected but substantial costs on their intended beneficiaries. He teaches courses in property, quantitative methods, urban housing, and policy analysis.



**Patrick T. Smith, PhD, MDiv**, Associate Research Professor of Theological Ethics and Bioethics; Senior Fellow, Kenan Institute for Ethics at Duke University, and Associate Faculty with the Trent Center for Bioethics, Humanities, and History of Medicine at Duke University School of Medicine, Durham, NC. He has specific academic interests in the areas of bioethics, social ethics, Black Church studies, and philosophical theology.



**Quayshawn Spencer, PhD, MS**, Robert S. Blank Presidential Associate Professor of Philosophy, University of Pennsylvania, Philadelphia, PA. His major focus is on metaphysical problems in the philosophy of science (eg, how to define "natural kinds"), philosophy of biology (eg, how to group organisms into biologically real subspecies), and philosophy of race (whether any folk racial classification divides people into real biological groups).



**Michael Yudell, PhD, MPH**, Professor and Chair, Community Health and Prevention, Director, Program in Public Health Ethics and History, and Affiliated Faculty, Department of History, Center for Science, Technology and Society Dornsife School of Public Health, College of Arts and Sciences, Drexel University, Philadelphia, PA. His work focuses on the history and ethics of genomics, of autism research, and of the race concept.

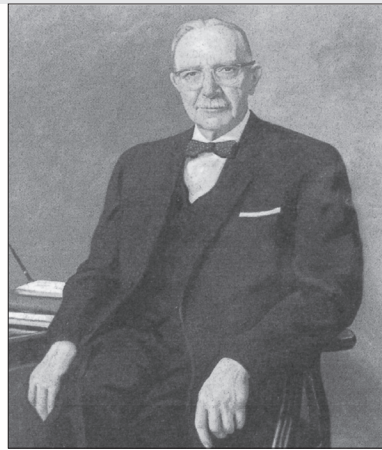


**Nancy Zisk, JD**, Professor of Law, Charleston School of Law, Charleston, SC. She is the author of several articles on the issues of race and gender in the workplace and college and graduate school education, such as "Embracing Race-Conscious College Admissions Programs: How Fisher v. University of Texas at Austin Redefines 'Affirmative Action' as a Holistic Approach to Admissions that Ensures Equal, Not Preferential, Treatment."



## Thomas Antley Pitts, II, MD

(1893-1991) served as a member of the Board of Trustees of the Medical University of South Carolina for thirty-six years and served as its chairman for twenty-five of those years. He left a substantial bequest to the Medical University to endow “a series of lectures on medical ethics”. The series has become known as the Thomas A. Pitts Memorial Lectureship in Medical Ethics, and has been held annually since 1993.



## Continuing Education Credit

The Office of Continuing Medical Education (CME) charges \$25.00 for a certificate of attendance. However, credit earned by MUSC personnel will be loaded into CME Tracker and you may view and print an unofficial transcript at no charge. See [musc.edu/cme](http://musc.edu/cme) <[musc.edu/cme](http://musc.edu/cme)> for details.

**Physicians:** The Medical University of South Carolina designates this live activity for a maximum of 6.75 *AMA PRA Category I Credits*™. Physicians should claim only the credit commensurate with the extent of their participation in the activity.

**Other Health Professionals:** The Medical University of South Carolina College of Medicine awards up to 0.675 CEUs or 6.75 contact hours (1 contact hour equals 0.1 CEU) to each non-physician participant who successfully completes this educational activity. The CEU (Continuing Education Unit) is a nationally recognized unit of measure for continuing education and training activities that meet specific educational planning requirements. The Medical University of South Carolina maintains a permanent record of participants who have been awarded CEUs.

## Accreditation Statement

The Medical University of South Carolina is accredited by the Accreditation Council for Continuing Medical Education (ACCME) to provide continuing medical education for physicians.

## Objectives:

At the conclusion of this activity participants will be able to:

- Discuss the role of race in medical school admissions
- Describe the extent of bias in medical education
- Provide bias-free care to patient in need of palliative care
- Discuss the concept of race in biomedical research

## Disclosure Statement

In accordance with the ACCME Essentials and Standards, anyone involved in planning or presenting this educational activity will be required to disclose any relevant financial relationships with commercial interests in the health care industry. This information will be made available to participants at the beginning of the activity. Speakers who incorporate information about off-label or investigational use of drugs or devices will be asked to disclose that information at the beginning of their presentation.

## Americans with Disabilities Act

It is the policy of The Medical University of South Carolina not to discriminate against any person on the basis of disabilities. If you feel you need services or the auxiliary aids mentioned in this act in order to fully participate in this continuing medical education activity, please call the Institute of Human Values in Health Care at 843-876-4977 by March 8th, 2018, or attach a note to your registration.

## Meeting Location, Charleston

The city of Charleston is steeped in history, tradition, and timeless charm. It is a city of romance and refinement, 300 years in the making. Enjoy the splendor of gardens framing the Battery, the charm of the cobblestone streets and alleys, and the grandeur of the historic churches. For 6 years Charleston has been ranked the #1 tourist attraction and small city in the U.S. by *Conde Nast Traveler*.

## Program Venue

All sessions take place at:

Storm Eye Institute  
167 Ashley Ave.  
8th Floor Storm Eye Auditorium Room 809  
Charleston, SC 29425

Attendees may park in the Ashley & Rutledge Garage: 135 Rutledge Ave. to enter from Rutledge Ave, near the corner of Rutledge and Calhoun St. or 158 Ashley Ave. directly across from The Storm Eye Institute.

